



Viva Comfort Slim Line Exam Table

[ADI996-FBASE-M2-BLK](#) [ADI996-FBASE-M2-BLU](#)

[ADI996-FBSU-M2-BLK](#) [ADI996-FBSU-M2-BLU](#)



Black



Midnight Express

Maximize space in your exam room without sacrificing storage or comfort. The **Viva Comfort Slim Line Exam Table** features a compact footprint with a dual-sided cabinet and two front euro-style drawers for easy access to supplies. Soft-closing drawers and doors add quiet convenience, while a pull-out step stool with safety tread and an extendable leg rest ensure patient accessibility and comfort. Built with a durable laminated frame and chip-resistant edges, this table is designed for lasting use. The antimicrobial 2" vinyl padding includes a manually adjustable backrest up to 68° for versatile positioning. A paper dispenser and cutter (sold separately) with extra roll storage further enhance efficiency, making this an ideal table for modern exam rooms.

Features

Accommodating: Adjustable backrest that can be positioned at different heights for the patient's optimal comfort.

Build: The all-laminated frame maintains the longevity of the exam bed and is hassle-free to clean.

Convenience: A pull-out step stool is provided so patients can effortlessly get on and off the exam table; when not in use, it pushes back into the base.

Storage: Dual-sided cabinet and two front-facing euro-style drawers with stainless steel slides ensure plenty of space for your frequently used supplies.

Quiet: Our drawers and cabinet are all soft closing which will minimize noise and wear and tear.

Equipped: The outfitted stationary feet are ideal for giving you a flat, sturdy surface.

Efficient: Underneath the exam table's padding, you can store up to 6 rolls of exam paper.

Sanitation: The antimicrobial upholstery is designed to provide a safe and hygienic environment for patients by reducing the risk of cross-contamination.

Practical: The paper roll dispenser and paper cutter (sold separately) allow for quick changing of the liner with the help of additional paper roll storage beneath the padding.

Sterile: An optional metal basin (sold separately) provides a durable, easy-to-sanitize receptacle for fluids or instruments, helping maintain efficiency and infection control during medical procedures.

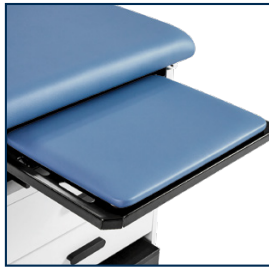
Supportive: Optional stirrups, available separately, support secure and adaptable patient positioning for gynecological examinations.

Features

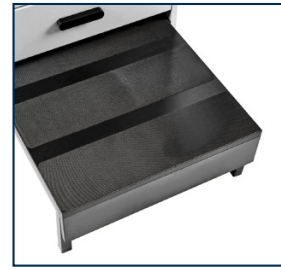


420 lbs.
weight capacity

Extendable



Pull-out Leg Rest



Retractable Step Stool

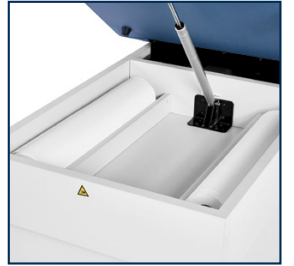
Storage



Dual-Sided Cabinet



Two Euro-Style Drawers



Paper Roll Storage

Upholstery Color Options



Black

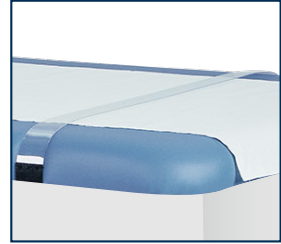


Midnight Express

Optional Add-Ons

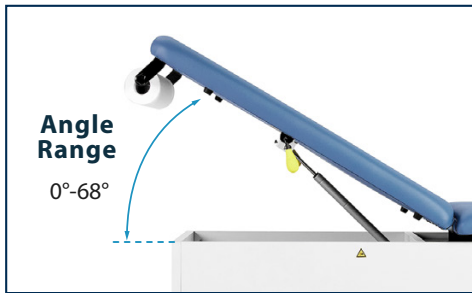


Paper Roll Dispenser
#ADI996-PA



Paper Roll Cutter
#ADI903-20PC

Accommodating



Adjustable Back Rest



Pull-Out Basin
#ADI996-SSB



Stirrups
#ADI996-STIRR

Specifications

Base Weight	197 lbs.
Base Dimensions	27.6" H x 20" W x 48.6" D
Weight Capacity	420 lb.
Material	Particleboard, Plywood, Iron, and Plastic
Finish	Laminate Board
Length with Leg Rest Extended	76.70"
Leg Rest	18.7"
Cabinet Dimensions	21" H x 21" W
Drawer Dimensions	4" H x 19.6" W x 17.4" D

Compatible Paper Roll Size	Length: 17.7" – 21"
Step Stool Dimensions	17.4" D x 20.3" W x 7" L
Ground To Top of Step Stool	7"
Certification	California CARB II Compliant
Mattress Weight	40.3 lbs.
Mattress	2-inch padded vinyl antimicrobial upholstery
Mattress Dimensions	2.75" H x 28.5" W x 58" L
Total Weight	237.3 lb.
Color Options	Black / Midnight Express

Viva Comfort Slim Line Exam Table with Stirrups



Midnight Express
Kit SKU: [ADI996-FBSU-M2-BLU](#)



Black
Kit SKU: [ADI996-FBASE-M2-BLU](#)

Specifications

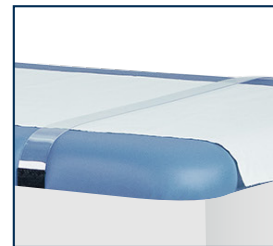
Stirrups
#ADI996-STIRR

Stirrup Material	Iron, Aluminum, and Plastic
Stirrup Weight	14 lbs.
Stirrup Dimensions	25" L x 10" W x 4.7" H
Stirrup Rotation	115°

Optional Add-Ons



Paper Roll Dispenser
#ADI996-PA



Paper Roll Cutter
#ADI903-20PC



Pull-Out Basin
#ADI996-SSB