

Step Stool
Stainless Steel Base





ADIME910-04

Step Stool Stainless Steel Base

with Optional Handrail

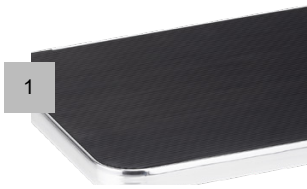
In a clinical environment, there's no room for compromise, and that goes for every piece of equipment in your facility, right down to the step stool. Built from heavy-duty 201-grade stainless steel, this professional step stool is engineered to meet the rigorous demands of hospitals, exam rooms, rehabilitation facilities, laboratories, and long-term care facilities where hygiene, safety, and durability aren't optional, they're the standard. With a 330 lbs. weight capacity and a wide non-slip platform, your patients and staff can step up and down with complete confidence. The high-traction rubber mat keeps footing secure even in fast-moving environments, while non-marring rubber leg tips protect your floors and eliminate unwanted sliding.



Product Specifications

- Constructed from 201 Grade Stainless Steel for superior corrosion resistance and longevity
- Engineered to support up to 330 lbs. weight capacity
- Non-porous stainless steel finish, easy to sanitize for clinical, laboratory, and food-service environments
- High-traction non-slip rubber mat ensures secure footing
- Reinforced non-marring rubber tips prevent sliding and protect floors from scratches
- 17.3" x 12.2" surface area provides ample room for comfortable mounting and dismounting

Product Features



Anti-Slip Surface



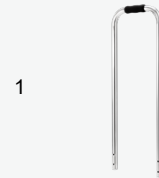
Rubber Tips

Product Model

ADIME910-04

Dimensions	9" H x 17.3" W x 12.2" D
Weight	6 lbs.
Material	Stainless Steel
Weight Capacity	330 lbs.
Tube Thickness	1"

Optional Accessory



Handrail

ADIME910-04-H

Dimensions	32.7" H x 11.8" W x 1.18" D
Weight	2 lbs.