



# UNIVERSAL MOBILE CART with Mounting Plates

- [ADIME912-C-MP-01](#) [ADIME912-C-MP-02](#) [ADIME912-C-MP-03](#)
- [ADIME912-C-MP-04](#) [ADIME912-C-MP-05](#) [ADIME912-C-MP-06](#)
- [ADIME912-C-MP-07](#) [ADIME912-C-MP-08](#)



Improve the efficiency of your medical facility with our Universal Mobile Cart and our eight different mounting plates, which are tailored to integrate with various patient vital signs monitoring systems. Our mobile cart features a telescoping pole with a height range from 29" to 49". This versatile cart offers exceptional flexibility to meet your needs and can quickly be adapted. Additionally, it includes a sturdy wire basket and cord organizer to ensure orderliness and accessibility in busy clinical environments.

Designed to withstand the rigorous demands of medical environments, our Universal Mobile Cart is built with a robust stainless-steel body. It's supported by five 2-inch thick wheels, 3 inches in diameter, two of which are equipped with brakes for enhanced safety. This ensures not only smooth maneuverability but also long-term durability, making it a reliable investment for your facility.

Our Universal Mobile Cart is compatible with monitors from four leading brands and offers a quick and secure installation process. Whether you're using a Viva Diagnostics Omni Spot Monitor, Welch Allyn Connex Spot Monitor, Edan Monitor, RVS-100 Vital Sign Monitor, or Covidien PM10N Monitor Series, our cart and mounting plates provide a stable and reliable platform for your vital signs monitoring equipment.

## FEATURES

**Compatibility:** Our mobile cart and mounting plates seamlessly integrate with various patient vital signs monitoring systems, including the Welch Allyn Connex Spot Monitor, Edan Monitor, RVS-100 Vital Sign Monitor, Covidien PM10N SERIES, and Viva Diagnostics Omni Spot Monitor.

**Adjustable:** The mobile cart's telescoping pole offers a height range of 29" to 49", accommodating different needs and users.

**Outfitted:** Its included wire basket enhances organization by providing storage space for accessories or supplies.

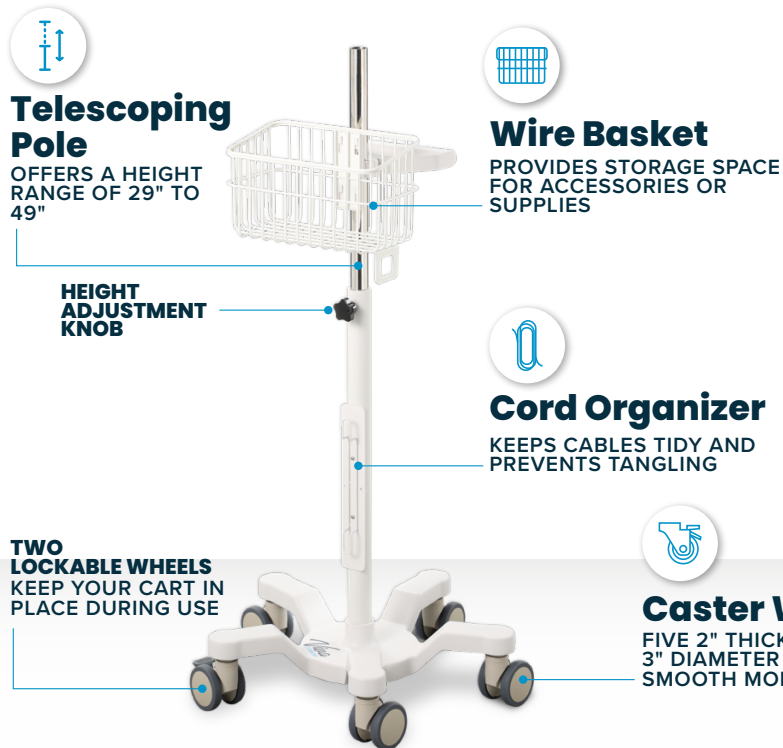
**Incorporated:** The cart's integrated cord organizer keeps cables tidy and prevents tangling.

**Construction:** The cart's body is made from durable stainless steel, ensuring longevity and resistance to wear and tear.

**Stability:** It features five 2-inch thick wheels with a 3-inch diameter, offering optimal smooth mobility.

**Secure:** The two lockable wheels will keep your cart in place during use and ensure no unwanted movement occurs.

## FEATURES



### Telescoping Pole

OFFERS A HEIGHT RANGE OF 29" TO 49"

HEIGHT ADJUSTMENT KNOB



### Wire Basket

PROVIDES STORAGE SPACE FOR ACCESSORIES OR SUPPLIES



### Cord Organizer

KEEPS CABLES TIDY AND PREVENTS TANGLING



### Caster Wheels

FIVE 2" THICK WHEELS WITH A 3" DIAMETER OFFER OPTIMAL, SMOOTH MOBILITY

**TWO LOCKABLE WHEELS**  
KEEP YOUR CART IN PLACE DURING USE

## SPECIFICATIONS: CART

Universal Mobile Cart Without Mounting Plates	
SKU:	ADIME912-C
Cart Weight:	20 lbs.
Cart Dimensions:	29"H x 20" D
Height Range:	29" to 49"
Wheels:	5, 2" thick wheels

## COMPATIBLE MONITOR MODELS FOR MOBILE CART WITH MOUNTING PLATE SERIES

Model (Mounting Plate)	Brand	Model No.
<b>ADIME912-MP-01</b>	Welch Allyn	All Computer display; Welch Allyn 4400 Monitor Connex Spot Monitor Without Work Surface
<b>ADIME912-MP-02</b>	Welch Allyn	Spot Monitors 7000 Series Connex Spot Monitor Within Work Surface
<b>ADIME912-MP-05</b>	Covidien	Covidien PM10N Seriest
<b>ADIME912-MP-04</b>	Riester	RVS-100
<b>ADIME912-MP-03</b>	EDAN	M serials : (Old models, discontinued, M80, M70, M60, M50) iM serials : (iM80/iM70/iM60/iM50) X serials : (X12/X10/X8i/X15/iX12/iX10)
<b>ADIME912-MP-06</b>	EDAN	EDAN Vital Signs: M3/M3A/M3B/iM3/iM3S
<b>ADIME912-MP-07</b>	EDAN	V serials: Edan EliteV8/V6/V5
<b>ADIME912-MP-08</b>	Viva Diagnostic	Omni Spot Vital Sign Patient Monitor



# Compatibility

SEAMLESSLY INTEGRATES WITH:

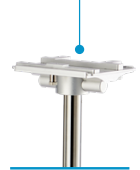


## SPECIFICATIONS: MOUNTING PLATES



### Universal Mobile Cart With Mounting Plates

SKU:	ADIME912-C-MP-01	ADIME912-C-MP-02	ADIME912-C-MP-03	ADIME912-C-MP-04
<b>Item Name:</b>	Universal Mobile Cart With Welch Allyn Connex Mounting Plate	Universal Mobile Cart With Welch Allyn Connex Mounting Plate With Work Surface	Universal Mobile Cart with Edan Mounting Plate	Universal Mobile Cart with RVS-100 Vital Signs Monitor Mounting Plate
<b>Total Weight:</b>	22 lb.	25 lb.	22 lb.	23 lb.
<b>Compatible Monitor:</b>	Welch Allyn Connex Spot Monitor	Welch Allyn Connex Spot Monitor	Edan Monitor	RVS-100 Vital Signs Monitor Mounting Plate
<b>Mounting Plate:</b>	Welch Allyn Connex	Welch Allyn Connex with Work Surface	Edan	RVS-100 Vital Signs
<b>Plate Weight:</b>	2 lb.	5 lb.	2 lb.	3 lb.
<b>Plate Dimensions:</b>	4" W x 4" D	11" W x 11" D	10" W x 5" D	10" W x 5" D



### Universal Mobile Cart With Mounting Plates

SKU:	ADIME912-C-MP-05	ADIME912-C-MP-06	ADIME912-C-MP-07	ADIME912-C-MP-08
<b>Item Name:</b>	Universal Mobile Cart with Covidien PM10N Series Mounting Plate	Universal Mobile Cart with Edan Monitors M3 Series Mounting Plate	Universal Mobile Cart with Edan Monitors Elite V Series Mounting Plate	Universal Mobile Cart with Viva Diagnostic Omni Spot Vital Sign Patient Monitor Mounting Plate
<b>Total Weight:</b>	23lb.	22 lb.	22 lb.	23 lb.
<b>Compatible Monitor:</b>	Covidien PM10N Series Monitor	Edan M3 Series Monitor	Edan Elite V Series Monitor	Viva Diagnostic Omni Spot Vital Sign Patient Monitor
<b>Mounting Plate:</b>	Welch Allyn Connex	Edan M3 Series	Elite V Series	Viva Diagnostic Omni Spot
<b>Plate Weight:</b>	3 lb.	2 lb.	2 lb.	3 lb.
<b>Plate Dimensions:</b>	9" W x 6" D	6" W x 5" D	7" W x 6" D	6" W x 5" D